



FEATURES

- 85-acre campus with multiple buildings
- Carrier-neutral facility with multiple providers
- Enterprise-grade security and redundancies

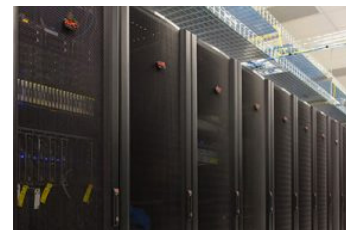
Phoenix-Chandler

2335 South Ellis Street, Chandler, AZ 85286

The Phoenix data center is located on an 85-acre campus with multiple buildings. This data center is well-suited for enterprise clients that require a robust data center infrastructure for mission-critical applications. This location is in an area considered one of the safest in the country: free from natural disasters including seismic activity, tornados and hurricanes.

OVERVIEW

- Planned to be the largest data center campus in the state
180,000 sq. ft. campus / 40-acre land purchase
- One of the most efficient in the country
- SOC 1 type 2 and SOC 2 type 2, PCI DSS (sec 9 & 12), HIPAA, ISO 27001, FISMA
- Built to TIA 942 Class 4 specifications.
- High Performance Computing (HPC) capable, supports 250 wpsf with the ability to support over 1,000 wpsf
- Capable of 250-1,000 watts per square foot
- Highly efficient power and cooling
- Historically free of seismic activity, tornados, and hurricanes
- Carrier-neutral, as well as dark-fiber connectivity option
- Carrier-neutral and part of the CyrusOne National Internet Exchange (IX)
- 100% uptime service level agreement on power
- 24/7 staffed NOCC and remote hands support
- Dedicated cages and private suite options available



Phoenix-Chandler

2335 South Ellis Street, Chandler, AZ 85286

POWER

- Multiple levels of redundancy available within same footprint (e.g. N, 2N)
- Ability to hold up to 90 MW of critical capacity (campus)
- 160 MW on-site substation
- Diverse power delivered by two independent circuits
- 400kVA PDUs with dual input STSs
- Scalable 2.25 MW Detroit Diesel dedicated generators pre-wired for additional capacity
- 5,000 gallon diesel fuel belly tanks

COOLING

- 36-inch raised floor design
- Indirect evaporative backed by chilled water plant
- Highly efficient multiple 500 ton Trane chillers with fast restart and adaptive controlled microprocessors
- Redundant water feeds

SECURITY

- Reinforced physical structure, including concrete bollards and steel-lined wall options for security, and bullet resistant glass
- Video surveillance and recording of the exterior and interior
- On-site security guards 24 hours a day, 365 days a year
- Man traps, revolving entrance doors; biometric and key card (color coded) security for rigid access control
- Cabinet and cage security options include individual locks biometric scanners
- Perimeter fence



FIRE PROTECTION

- Very early smoke detection apparatus (VESDA) system samples air in parts per million, coupled with a zonal dual-action interlocking dry-pipe pre-action system

COMPLIANCE

- SOC 1 type 2 and SOC 2 type 2
- PCI DSS
- HIPAA
- ISO- Information Security Management Standard
- FISMA- The Federal Information Security Management Act
- Built to TIA 942 Class 4 specifications

COMPLIANT-READY SOLUTIONS



U.S. • EU
SAFEHARBOR
U.S. DEPARTMENT OF COMMERCE

HIPAA
COMPLIANCE READY SOLUTIONS

PCI Security Standards Council
COMPLIANCE READY SOLUTIONS

