

#### FEATURES

- 150,000 square feet
- Carrier-neutral facility with multiple providers
- Enterprise-grade security and redundancies

# Norwalk

6 Norden Pl, Norwalk, CT 06855

The Norwalk, Connecticut data center is a 150,000 square-foot facility and offers up to 16 MW of power and 30,000 square feet of work area recovery space to deliver world-class performance and amenities in a secure, redundant environment. As Connecticut's largest data center, the Norwalk facility is perfectly situated for companies along the east coast for production, disaster recovery, and business continuity purposes.

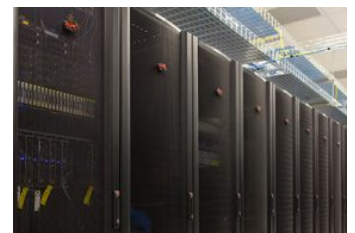
#### SITE SPECIFICATIONS

- 75,000 colocation square feet(CSF)
- 30,000 square feet work area recovery space, featuring dedicated office suites configured per customer requirements
- Carrier-neutral



#### BUILDING FEATURES

- Power and cooling are delivered under a 36-inch raised white floor space
- 3,000 tons of N+1 cooling capacity with roof-mounted air-cooled chillers
- Carrier-neutral facility with two MDF rooms provides dual access to multiple providers for flexible connectivity
- Building and all critical equipment are above 500-year flood zone
- Comprehensive fire protection system



# Norwalk

6 Norden Pl, Norwalk, CT 06855

## POWER

- Designed to deliver 99.999% availability
- Power to facility provided via three separate feeds from two separate utility companies (Connecticut Light and Power and Third Taxing District)
- Up to 16MW of redundant power to back up the facility for continuous operations
- Uninterruptible power supply (UPS) units configured in N+1 and 2N redundant configurations
- Supports high-density configurations

## COOLING

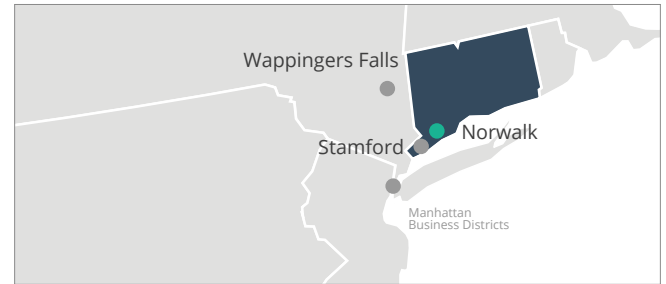
- Power and cooling are delivered under a 36" raised data center floor
- 3,000 tons of N+1 cooling capacity with roof mounted air cooled chillers

## SECURITY

- 24/7 year-round video surveillance to monitor and control access within the facility
- Biometric access readers
- Advanced proximity card readers
- Motion sensors
- Surrounding security corridor
- Central security office monitors all systems

## COMPLIANCE

- SSAE 16 and PCI compliant
- Privacy Shield certified annually



## OPERATIONS

- 24/7 year-round network operations center (NOC), technical support, remote hands, and environmental and managed services monitoring

## LOCATION

- Conveniently located near dozens of hotels, restaurants, and other amenities
- Close to I-95, Merritt Parkway and Metro North RR Station

## COMPLIANT-READY SOLUTIONS



U.S. • EU  
**SAFEHARBOR**  
U.S. DEPARTMENT OF COMMERCE

**HIPAA**  
COMPLIANCE READY SOLUTIONS

**PCI** Security Standards Council  
COMPLIANCE READY SOLUTIONS

