

FEATURES

- 400,000 colocation square feet (CSF)
- Carrier-neutral facility with multiple providers
- Enterprise-grade security and redundancies

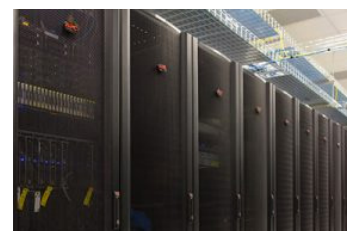
Dallas-Carrollton

1649 West Frankford Rd., Carrollton, TX 75007

The Dallas-area data center is conveniently located near two major airports and multiple interstate highways. The 670,000-square-foot facility offers 400,000 colocation square feet(CSF) and 60,000 square feet of work-area recovery space. This flagship data center is specifically designed to meet the increasing demand for business continuity solutions on a 24/7 year-round basis.

GENERAL

- Up to 670,000 square feet data center
- 400,000 colocation square feet(CSF) and 60,000 square feet work-area recovery space
- One of the most efficient in the country
- SSAE 16 SOC 1 and SOC 2 Type II audited; ISO 27001, PCI DSS and Open-IX certified; HIPAA/HITECH and FISMA High compliant
- Designed to meet TIA-942 requirements
- Carrier-neutral and part of the CyrusOne Internet Exchange (IX)
- 100% uptime service level agreement on power
- 24/7 year-round staffed NOCC and remote hands support
- Dedicated cages and private suite options available
- Wholesale and retail colocation options
- Zone X flood zone rating (low risk)
- Zone 0 seismic zone rating (lowest risk)
- Light industrial commercial zone rating



Dallas-Carrollton

1649 West Frankford Rd., Carrollton, TX 75007

POWER

- Can accommodate up to 60MW of critical capacity
- 150–200+ W per square foot
- Multiple levels of redundancy available within the same footprint (e.g., N, 2N)
- Diverse power delivered by two independent circuits
- 750kVA Mitsubishi UPS systems; each power leg has a dedicated UPS with battery backup
- Scalable 2.25MW Detroit Diesel dedicated generators pre-wired for additional capacity
- 6,000-gallon belly tank per generator

COOLING

- 36-inch raised white floor design
- 35-foot ceiling height from data center floor, utilizing Stultz 100-ton CRAH units with electronically commutated (EC) variable-speed fans
- Highly efficient multiple 500-ton Trane chillers with rapid restart and adaptive controlled micro processors (with ability to scale as density increases)
- Closed-loop chilled-water-cooling design

SECURITY

- On-site security guards 24/7 year-round
- Dual authentication entry into building and data halls; biometric and key card (color-coded) security for rigid access control
- Cabinet and cage security options include individual locks and biometric scanners
- Perimeter fence

COMPLIANCE

- SSAE 16 SOC 1 and SOC 2 Type II audited; ISO 27001, PCI DSS and Open-IX certified; HIPAA/HITECH and FISMA High compliant



FIRE PROTECTION

- Very early smoke detection apparatus (VESDA) system; sampling air in parts per million coupled with a zone-based dual-action interlocking dry-pipe pre-action system

LOCATION

- 60,000 square feet+ office space, common areas, recreation center, premium customer offices and kitchen
- 10 miles from DFW International Airport (DFW) and 12 miles from Dallas Love Field Airport (DAL)
- Secure parking for customers and visitors

COMPLIANT-READY SOLUTIONS



U.S. • EU
SAFEHARBOR
U.S. DEPARTMENT OF COMMERCE

HIPAA
COMPLIANCE READY SOLUTIONS

PCI Security Standards Council
COMPLIANCE READY SOLUTIONS

