



#### FEATURES

- 95,000 sq ft facility
- Multiple connectivity options
- Enterprise-grade security and redundancy

# Salt Lake City DC2

14926 Pony Express Dr., Bluffdale UT 84065

95,000 sq. ft. data center that provides network diverse connectivity, rigorous critical systems infrastructure and multi tiered security protocols. This premium facility was designed to support immediate and future needs for enterprises looking for cloud or colocation services. This facility also provides a great option as a secondary or Disaster Recovery site for those looking in the Salt Lake City area.

## SPACE

### Building

- 95,000 sq ft facility
- 65,000 sq ft raised floor
- Engineering to Zone 4 standards. No base isolation.

### Data Center Floor

- Sealed cement subfloor with vapor barrier
- 36" raised floor with seismic engineering
- Raised flooring rated at 1250 lbs./sq. ft. or better

## POWER

### Utility Power Capacity

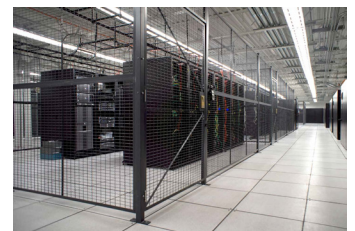
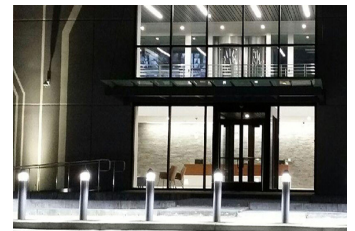
- 10 MW

### Capacity for IT Loads

- Up to 6.0 MW at full build-out/occupancy

### Capacity for Mechanical Loads

- Up to 2.0 MW at full build-out/occupancy



# Salt Lake City DC2

14926 Pony Express Dr., Bluffdale UT 84065

## MECHANICAL

- Hybrid (Chilled Water/Glycol, Evaporative, and Free-Air)

### Design Operating Temp. (Cold Aisle Inlet Temp)

- 70-80 degrees Fahrenheit

### Design Humidity

- 30 – 40%

### Outside Air Mix

- Variable based on environmental conditions

### Forced Air Plenum

- Raised Floor Plenum fed by down flow CRAC units



## CONNECTIVITY

### Fiber and Building Entry

- Highly connected with multiple Tier 1 and Tier 2 providers on-net
- Multiple Diverse Entrances
- Multiple geographically diverse carriers
- Fiber connectivity available to Salt Lake City facility

## RELIABILITY

### System Redundancy

- N+1 for all critical system components (UPSs, CRAC's, etc.)

### UPS Systems

- N+1 or better redundancy per leg
- Ten minutes of runtime at full load
- Concurrently maintainable

### Transformers

- N+1 or better redundancy

### Generators and Transfer Switches

- N+1 or better generator redundancy
- 36 hours of fuel storage onsite plus priority refueling contracts
- Isolation Bypass Transfer Switches
- Concurrently maintainable

## COMPLIANCE

- SSAE 16, HIPAA, and PCI audited

## SECURITY

- Security staffed 24/7/365
- Key-card access to perimeter doors
- Two factor access control to data center rooms
- Managed circle-lock mantrap
- Video surveillance of building perimeter, roof and all sensitive areas of building with minimum 90-day video retention
- Client supplied RFID key-card and biometrics

## COMPLIANT-READY SOLUTIONS



U.S. • EU  
**SAFEHARBOR**  
U.S. DEPARTMENT OF COMMERCE

**HIPAA**  
COMPLIANCE READY SOLUTIONS

**PCI** Security Standards Council  
COMPLIANCE READY SOLUTIONS

