

FEATURES

- 1,133,391 sq. ft.
- Multiple connectivity options
- Enterprise-grade security and redundancy

Chicago

350 E Cermak Rd, Chicago, Illinois 60616

Located in downtown Chicago, this facility is the premier mission-critical data center in the Midwest and one of the largest data centers in the world consisting of over 1.1 Million square feet. This facility provides access to over 40 of the leading domestic and international carriers and physical connection points of the world's telecommunications networks and Internet backbones.

SPACE

Building

- 8 stories; 1,133,391 sq.ft.

Flood Zone

- Zone X (Unshaded): Outside 500 year flood plain

Seismic

- Zone 0

POWER

Utility Power Capacity

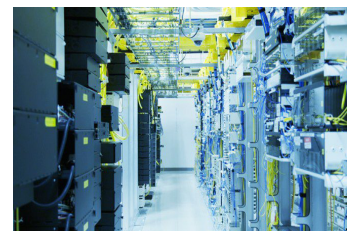
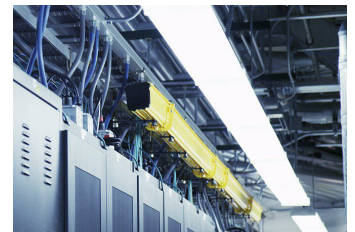
- 12,500 (kW) Shared
- Diverse Generating Stations

UPS Power Capacity

- 3,690 (kW)

Power Density

- 125-275 (W/sq.ft.)



Chicago

350 E Cermak Rd, Chicago, Illinois 60616

CONNECTIVITY

Fiber and Building Entry

- Multiple Diverse Entrances

Peering Exchanges

- UnitedIX

RELIABILITY

UPS Redundancy

- N+1, 2N

Generator Power Capacity

- 12,750 (kW) Shared

Generator Redundancy

- N+1, N

Cooling Redundancy

- N+1

SECURITY

- Monitored by CCTV Camera Systems 24/7
- Biometric and Photo Badge Access Authentication Points for Data Center Entry
- Security Check-In at Lobby with Man Trap into the Data Center Suites
- Elevator Authentication and Corridor Security
- Digital video monitoring and recording

COMPLIANCE

- SOC2, SOC3, HIPAA Compliant



BUILDING STRUCTURE

Roof

- Membrane and Reinforced Concrete Decking
- Roof Rights Available - ICB

Floor Loading

- Up to 200 (lbs/sq.ft.)

Parking

- Available

COMPLIANT-READY SOLUTIONS

