

FEATURES

- 86,000 + sq. ft. of colocation space
- Uptime Institute M&O Certification
- Enterprise-grade security and redundancy

Atlanta DC2

Greater Atlanta Area

86,000 sq. ft. data center that provides network diverse connectivity, rigorous critical systems infrastructure and multi-tier security. Designed to support immediate and scalable growth needs for enterprises looking for cloud or colocation services. This facility also provides a great option as a secondary or Disaster Recovery site for those looking in the Atlanta area.

SPACE

Building

- Located outside the perimeter of Atlanta
- One story building
- 86,005 sq. ft.
- Raised floor (inches) = 30



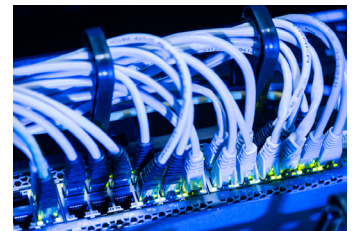
POWER

Utility Power Capacity

- 6.8 MW
- Power density minimum (W/sf) = 150

Generator Redundancy

- N + 1 + 1
- Minimum two fuel replenishing companies



MECHANICAL

Cooling System Configuration

- N + 1
- Temperature and humidity managed to strict ASHRAE standard



Atlanta DC2

Greater Atlanta Area

FIRE DETECTION AND SUPPRESSION

- VESDA provides early warning detection
- Pre-Action system utilizes two detection methods; one ionized and one photo electric detector interlocked with the dry pipe sprinkler system

CONNECTIVITY

- Dedicated access to Tier 1 IP backbone and one of the largest global networks
- HAN Internet access provides bandwidth connectivity from 1 megabit to 10 gigabits
- Comprehensive service level agreement for 100% network availability
- Carriers: CenturyLink, AT&T (Bell South), Fiberlight, Zayo (Abovenet), Zayo (AFS), TW Communications

UPTIME AND RELIABILITY

This facility has passed the Uptime Institute Maintenance and Operations (M&O) Certification. Uptime M&O certification is the first and only unbiased and industry ratified standard by and for data center operations. M&O certification also provides a third-party validation of operational excellence, consistent process, procedures and training, which ensures data center availability, sustainability, and consistency.



SECURITY AND COMPLIANCE

- Logical and physical security
- Biometric card readers
- Centralized global security operations center
- Internal and external video surveillance cameras
- Customers have the ability to add incremental security options such as intra cage video cameras and card or biometric readers

COMPLIANT-READY SOLUTIONS

